

DS2 SERIES EQUALIZER KIT INSTALLATION

TOOLS REQUIRED:

- 1 1/8" Hole Saw

1

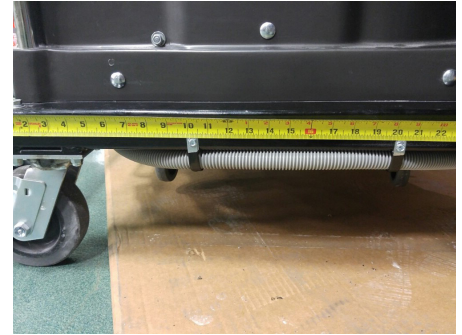


Screw straight barbed fitting into metal hose connector

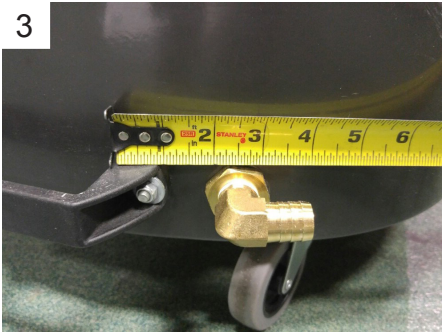
2



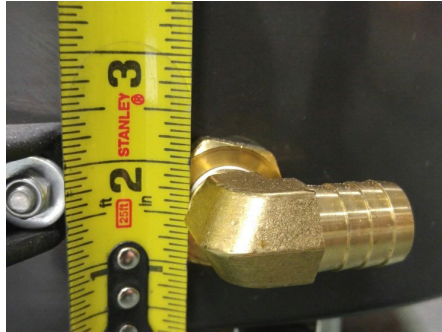
Install 3 vinyl-coated clamps using the provided #10-16 x 5/8" self-tapping screws. The first clamp should be installed on the front of the machine 12" from the left side. The second and third clamps should be installed on the left side of the machine (if you are looking at it from the front) at the 10" and 20" marks measuring from the rear.



3



Using a 1 1/8" hole saw, prepare to drill a hole in the rear of the dustpan for the bulkhead connector. The connector hole should be approximately 2.5" away from the dustpan lever and approximately 1.5" from the bottom of the dustpan.



4



After drilling the hole, install the bulkhead., and then screw the 90° barbed fitting into the bulkhead

5



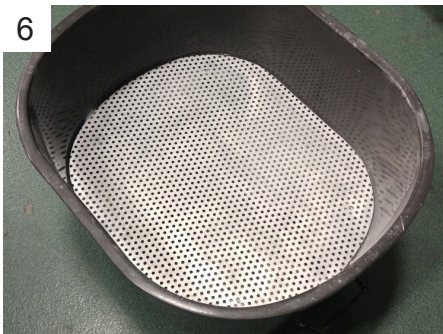
Prepare to install the dustpan screen that will sit above the bulkhead connector by installing all 4 PVC spacers onto the caster studs inside of the dustpan

DS2 SERIES EQUALIZER KIT INSTALLATION

TOOLS REQUIRED:

- 1 1/8" Hole Saw

6



Lay the plate onto the spacers and install into place by using the provided #10-32 buttonhead screws and screwing them onto the PVC spacers

7



Place the plastic bag into the dustpan with approximately 2 - 3" overlapping the lip

8



Slide the dustpan into the unit

9



Connect the hose to the barbed fitting

10



Lock the dustpan into place by pushing down the the foot-actuated lever



FINISHED INSTALLATION